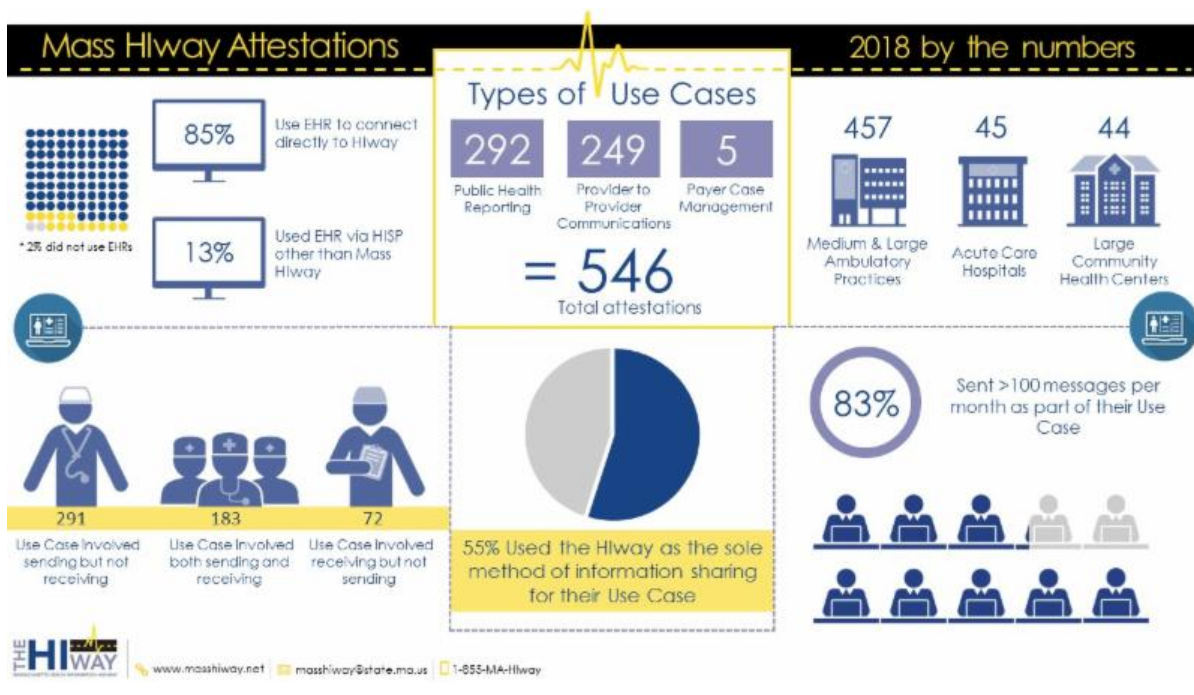


For more information, visit www.masshiway.net
 Refer a colleague to sign up for the newsletter [here](#)

2018 Attestation by the Numbers

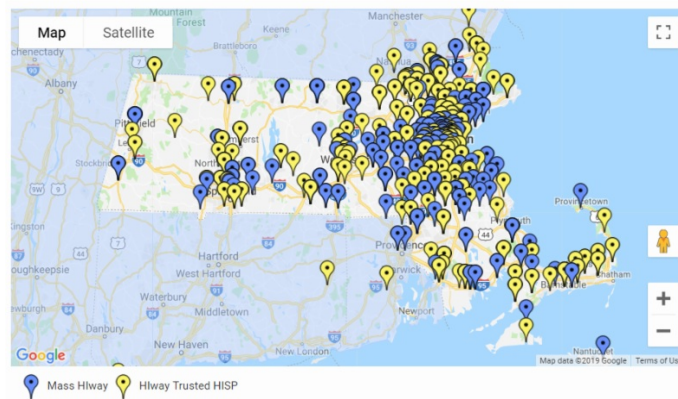
Now that the 2018 attestation period is over, let's look at the numbers. Check the graphic below to see how many organizations attested, the types of use cases they reported, and the number of messages they sent.



New: Hlway Connections Map

Explore the new Hlway Connections Map, which replaces the original Hlway Directory on our website. The new map shows whether organizations are connected to the Hlway directly or via a Hlway trusted HISP (Health Information Services Provider). This enhanced view on the Hlway connections aims to assist providers in their interoperability efforts. To access the map, click [here](#).

The new map will also enable you to find suitable trading partners for meeting the Hlway connection requirement. [The Mass Hlway Regulations](#) require a use case that exchanges health information across the Hlway. This means that either the sending or receiving organization, or both, must be connected to the Hlway directly.



Update: Hlway 2.0 Migration

The Hlway 2.0 migration continues to progress. If you haven't initiated your migration, please do so as soon as possible.

Time is running out. The shutdown start date for Mass Hlway 1.0 is targeted for 5/15/2019.

Mass Hlway participants must initiate their migration by submitting a completed Declaration of Identity (DOID) Form and Healthcare Organization (HCO) Form.

All completed forms were due on 2/19/19.

Please email your completed forms as soon as possible, or send any questions about the forms to Hlway2.0Migration@state.ma.us.

If you prefer to send these documents via Direct message or postal mail or need more detailed instructions for how to complete these forms, visit the [Hlway 2.0 Migration website](#) for an overview of the process and instructions for these forms.

If you don't receive confirmation that your forms have been received within 3 days after your form submission, please email Hlway2.0Migration@state.ma.us.

For more information and instructions:

Hlway 2.0 Migration Webinar

Hlway 2.0 Tutorial for Completing
Required Forms

If you have questions about the Hlway 2.0 migration process or completing the DOID and HCO forms, please email us at Hlway2.0migration@state.ma.us.

2019 Connection Requirement

For 2019, the [Mass Hlway Regulations](#) (101 CMR 20.00) require all Acute Care Hospitals, all Community Health Centers, and Large and Medium Medical Ambulatory Practices to connect to the Mass Hlway. These organizations must have met the requirements by January 1, 2019 and must attest that they met the requirements between June 1 and July 31, 2019.

Large Community Health Centers and Large and Medium Medical Ambulatory Practices are entering year 2 of the connection requirement and must implement a provider-to-provider communications use case. The following resources can help your organization implement a care coordination use case with a trading partner and be prepared to meet this requirement:

[Hlway Connections Map](#)[HIE Toolkit](#)[Hlway Adoption and Utilization Support \(HAUS\) Services](#)

For more information:

[Care Coordination Using HIE and the Mass Hlway Webinar](#)[Care Coordination Using HIE and the Mass Hlway slides \(PDF\)](#)

Upcoming Webinar: 2019 Requirements and Attestation

Tuesday, February 26, 2019, 12-1 p.m.

[Register Here](#)

Upcoming Webinar: HAUS for Providers Who Need to Meet the 2019 Requirement

Hlway Adoption and Utilization Support (HAUS) Services are provided by EOHHS through the Mass Hlway. The goal of HAUS is to help organizations implement HIE and leverage secure Direct Messaging to share healthcare information, such as discharge summaries, summaries of care, and referrals. The HAUS Services are provided by Hlway account managers, who will act as a resource to your staff to:

- Enroll your organization in HAUS;
- Provide project management to implement HIE;
- Identify a high value HIE use case and related trading partner organizations;
- Develop a project plan and charter to manage the HIE use case implementation;
- Help identify a project team across the organizations that will exchange information;
- Facilitate meetings, calls, and emails among the trading partners and vendors; and
- Provide workflow improvement training so staff can effectively use the HIE technology.

Tuesday, March 19, 2019, 12-1 p.m.

[Register Here](#)

HIT in the News



[Massive rule drops](#) at HIMSS19: CMS, ONC, propose new regulations to transform the future of interoperability and patient access



[2018 was a record](#) year in HIPAA enforcement

[Video](#): HL&'s Grieve: FHIR will set data free, empowering both patients and providers

[CMS proposes](#) interoperability rules to increase EHR access

Mass Hlway | masshiway@state.ma.us | www.masshiway.net

Executive Office of Health and Human Services

Commonwealth of Massachusetts

100 Hancock Street

Quincy, MA 02171

Copyright © 2018. All Rights Reserved.